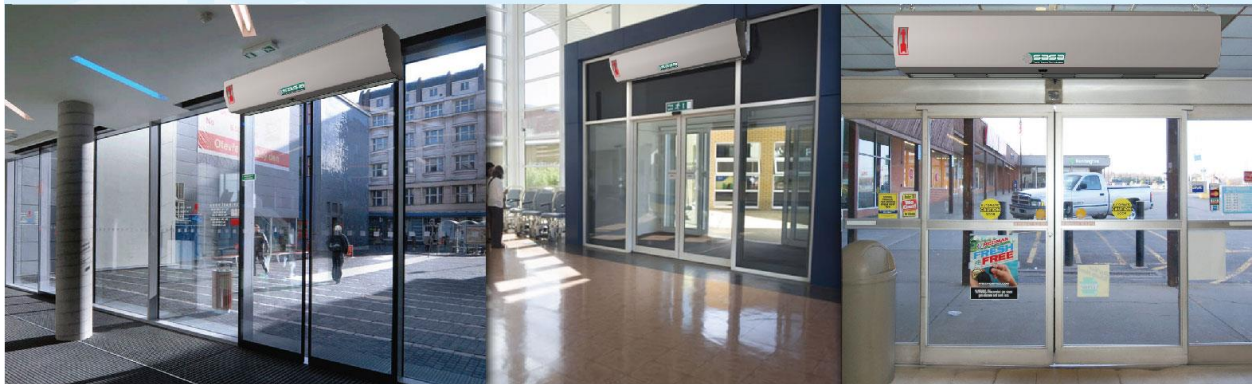


# SafeDar

Air Curtains



- ◆ Heavy-duty Steel Casing.
- ◆ Strong Fire Resistance
- ◆ Motor Design for Continuous Operation upto 6000 hrs.
- ◆ Unit can run Good Hours without any Defeats.



# SafeDar

Air Curtains

## The Concept of Air Curtains.

The Concept of using a current of Air as invisible "Curtain" between the outside and inside Zones in a entrance area originally comes from tire USA her advanced duct systems are constructed using powerful Blower Fans in the ceiling and extraction grids in the floor. These systems are extremely expensive to instal To overcome the problems of high manufacturing costs difficult installation process etc., a cheap and Cost effective way of achieving the same results is conceived. The device thus developed has now commonly known as the "Air Curtain"

## What is an Air Curtain.

An air curtain is exactly what the name implies. It is a curtain of air which creates a barrier between the outside and inside atmosphere. An air curtain will not only keep the cool air to and the hot air out, but will also protect the inside environment from being contaminated by outdoor pollutants like dirt and dust, smoke, fumes, odors and also insects.

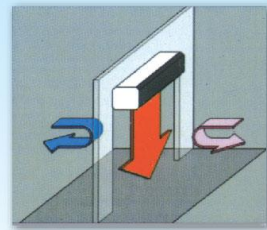
## How an Air Curtain Works.

All air curtains have a specially designed fan that generates an intense airflow that blows across an open doorway. The kinetic energy in the moving air generate a barrier, like a waterfall, that prevents leakage of air between two areas with different pressure and of the conditioned inside air.

## Air Curtains Offer "Savings 'n' Comfort".

An open doorway in Shops and Malls is an invitation for customers to enter. But it also stands for a considerable amount of energy loss in building and lets in the unwanted outside influences: A correctly installed **SafeDar** air curtain can reduce the cooling loss through open doorways by up-to 85% , thereby offering enormous savings in energy costs.

At the same time **SafeDar** air curtains also keep the insid atmosphere clean, healthy, insect free and very comfortable.



Air curtain flow Pattern



Mettalic Suction from Top.



## Selecting an Air Curtain that is Just right for your application.

Choosing the appropriate air curtain is crucial for getting optimum efficiency and comfort. An air curtain with too little air velocity will not be able to supply the necessary power to prevent the influx of outside air near the floor. Installing a too powerful air curtain at low door heights will feel uncomfortable for the people standing beneath and will generate unnecessarily much noise, for best result it is important that the entire doorway is covered by a continuous airflow from top to bottom and side to side.

### STANDARD AIR CURTAINS

Max. Door Height M(ft.) = 4.5m or 15 ft  
 Max. Outlet Velocity m/s(fpm) = 21(4133)

STANDARD SPECIFICATIONS.								
Model No.	Unit Size (mm)	Installation Height (m)	Power (W)	Air Speed (m/s)	Air Flow (m <sup>3</sup> /h)	Noise db(A)	Net Weigh (kg)	Elects.
SAC-36	900 x 230 x 212	4.5	415	21	1450	54	15.3	220V/50Hz/1-Ph
SAC-48	1200 x 230 x 212	4.5	540	21	1950	55	19.0	
SAC-60	1500 x 230 x 212	4.5	730	21	2400	58	22.6	
SAC-72	1800 x 230 x 212	4.5	795	21	2900	57	31.5	

### INDUSTRIAL/HEAVY DUTY AIR CURTAINS

Max. Door Height M(ft.) = 8 (26.24)  
 Max. Outlet Velocity m/s(fpm) = 30(5904)

STANDARD SPECIFICATIONS.								
Model No.	Unit Size (mm)	Installation Height (m)	Power (W)	Air Speed (m/s)	Air Flow (m <sup>3</sup> /h)	Noise db(A)	Net Weigh (kg)	Elects.
SIAC-40	1000 x 274 x 288	8	1500	30	4000	67	33	400V/50Hz 3-Ph
SIAC-48	1200 x 274 x 288	8	1500	30	4000	72	36	
SIAC-60	1500 x 274 x 288	8	2250	30	6000	72	54	

### PRODUCT OUTLINE:

AIR CURTAINS are designed for installation in shops, office buildings, hotels and restaurants doorway. They discharge a curtain of air, which effectively shut out outside air. Use them to keep out insects, unpleasant smells, and dust from indoor where a large number of people pass in and out. These air curtains also prevent air escaping from an air-conditioned room.

### CONDITIONS OF USE:

- Please DO NOT install the unit under following conditions:
1. Do not operate ambient temperature over 50C or below -10C.
  2. A relative humidity over 95% at room temperature and steamy area.
  3. Contains of oily smoke, materials or gases may cause explosion.
  4. Nearly corrosive gases.
  5. Locate in, where may be sprinkle with water.



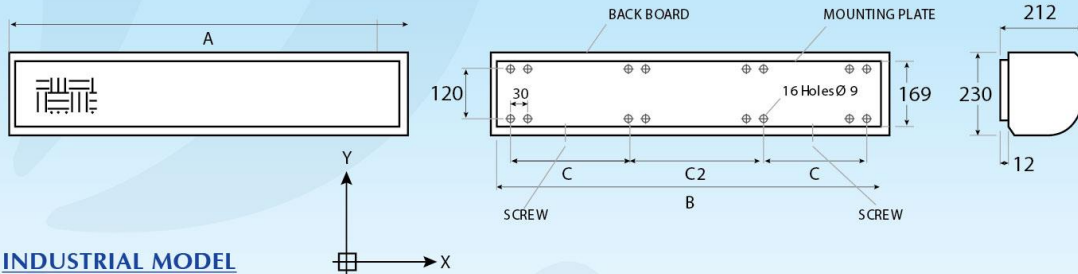
## STANDARD AIR CURTAINS

MODEL NO.	A	B	C	C2
SACH-36	900	850	250	250
SACH-48	1200	1150	333	333
SACH-60	1500	1450	450	450
SACH-72	1800	1780	560	560

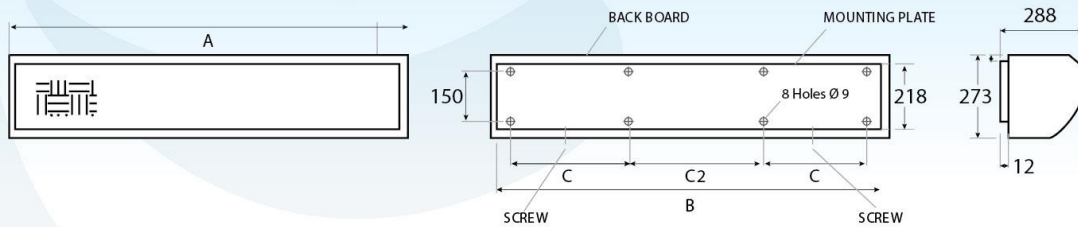
## INDUSTRIAL/HEAVY DUTY AIR CURTAINS

SIAC-40	1000	940	320	300
SIAC-48	1200	1140	420	300
SIAC-60	1500	1440	570	300

### STANDARD MODEL

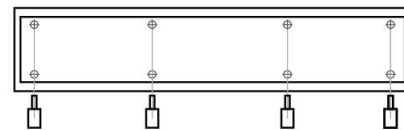


### INDUSTRIAL MODEL



### INSTALLATION:

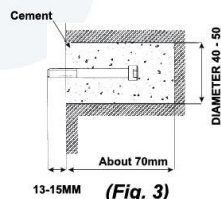
1. Unscrew the mounting plate and take it off. (Fig. 1, Fig.2)
2. Drill as mentioned. Then put into the Rawel bolts.(Fig.3)
3. Hanging on the mounting plate and ensure fix it. (Fig.4)
4. Installing the machine onto the mounting plate and ensure the safety, than fix it tighten with screws. (Fig-5)



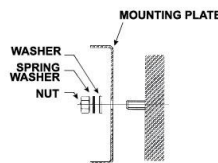
(Fig. 1)



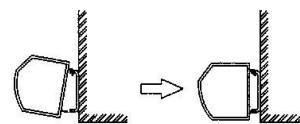
(Fig. 2)



(Fig. 3)



(Fig. 4)

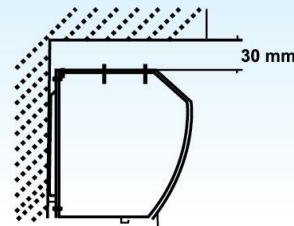


(Fig. 5)

### CAUTIONS / INSTALLATIONS:

During installing the unit, please pay special attention to the following points in order to obtain the ultimate efficiency.

1. Install on solid place to avoid vibrations when machine is running and also for safety reason unnecessary noise caused by vibration can be prevented.
2. AIR CURTAINS are used for indoor purpose.
3. Depending on the height to choose the most suitable model. If it is fixed too high, the shut-off distance will be affected then the efficiency will be reduced.
4. The air is drawn in front of the unit and is blown out downwards.
5. Several units can be mounted next to each other when wide door opening occur. Under such condition, a narrow space in between 20-40mm may happened.
6. During installation, the mounting plate should not have a gap between the walls.
7. The distance between the unit and the ceiling must reserve at least 30mm.
8. The unit is installed horizontally.
9. Recommend installing the machine at the height of at least 2.3M above the ground.
10. A triple pole switch should precede the appliance with at least 3mm breaking gap.





هذه كوائل مصنع توفر (صيفدر در ستارة) للافضلية التجارية وهذه جيدا للحاجات التجارية، (صيفدر ستارة) على مصنع كوائل فى انواع و تصميمات المختلفة تكميل كل حاجتكم مشتمل فى الاستعمال للمستوداعات . مباني للمكاتب . المعظم، النافذات . المستشفى . البيوت . (التخزين الباردة) وغرفات و هذه مصنوعات حسب (ضغط الهوائى) وحسب رغبتكم وتوفر للستهلاتكم كاملا. هذه ستارة الهوائى توفر الوقايتكم من كل الحشرات والغبار ممكن داخل بواسطة الهواء وايضا مفيدا لبقى (الدرجة الحرارة) الداخلى حسب رغبتكم والانجاز افضل من هذه الانتاج توافر اضافة فى صلاحية الانتاجات الواقعي من كل امراض الوبائى وايضا تكميل جميع حاجات الصناعية لان هذه مصنع دائما الواقى من الاثرات الكيميائية والموسم و (كوائل البولى) كما جميل و هذه ستارة (الهوائى) يحتفظ من كل الصوت ورشات ومصنع كوائل مشتمل (اجهزة) اتوماتيكي فى ستارة (الهوائى) كما الواقى من النار و لاداخل من هذه ستارة و ذالك هذه تارة الهوائى دائما فى الاستعمال .

## SASA METAL INDUSTRIES

Plot No. 109/110, Sector 15, (K.I.A)  
Korangi Industrial Area,  
Karachi -74900  
Pakistan  
Tel: +92 021-35065840-42,

**Fax:** +92 021-35066651-2,  
**Email:** sasaindustries@hotmail.com  
sasaindustries.pk@gmail.com  
**Web:** www.smi-pk.com

**Regional Office:**  
#.204 2nd Floor, Chinab Center Blue Area,  
Islamabad - Pakistan  
**Tel:** +92 051-2347283  
**Email:** sasaindustries.isb@gmail.com